

Instructional Resources

Mead School District

Total Reader™

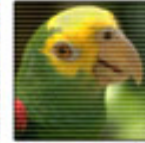
- Measure lexiles of students grades 3-10
- Students use Novell username, Staff use Skyward username
- www.totalreader.com

www.lexile.com

- book searches
- book lists
- analyze text

The logo for netTrekker features a stylized blue '@' symbol on the left, followed by the word 'net' in a blue, italicized, sans-serif font, and 'Trekker' in a larger, blue, italicized, serif font. The entire logo has a white outline and a slight drop shadow.

- educational search tool
 - web pages, files, documents, lessons
- It's a resource for: teachers, students & parents
- www.nettrekker.com



- videos, clips, images, clipart
- lesson plans
- quiz maker
- assignment builder
- www.unitedstreaming.com
- Resource for: staff

Curriculum Matrix

- standard aligned lessons
- Resource for : staff
- <http://mead.edgate.org>
 - Username: See your building tech mentor

Mead Learning Network



- http://mln.mead.k12.wa.us/blog/mead_learning_network
- Access training documents, new technologies, classroom showcases, websites

Follett

- Catalog System for libraries
- <http://library.mead.k12.wa.us>

- 1,500 full text sources, easy search interface; includes magazines, newspapers, books and more
- <http://www.proquestk12.com>
- Username: 60-9842 Password: See your building tech mentor



- Track student performance data
- <http://mead.edmin.com>
- not available yet



- Access national and state documents that include standard forms, NCLB act, special education documents, legal documents
- <http://www.transact.com>