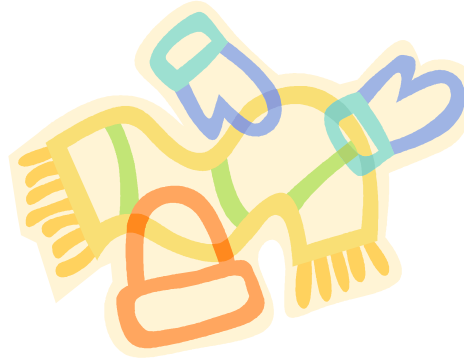


# Cold Weather is Here!



As winter gets colder, the district will be using the list below of weather-condition-notification-systems to keep you in the know:

- Keep your TV and/or Radio tuned to local stations for up-to-the minute weather conditions and school closures.
- The Mead School District Webpage will have an Emergency Alert Message to let you know about school closures.
- E-Notify messages will be sent out from your school to your home email address. If you don't receive E-Notify, please go to your school's homepage and sign up today!
- Call 465-SNOW (465-7669) to hear an up-to-date recording of current road conditions or school closures.

When it's cold outside elementary schools will use these general guidelines for outside time:

- Students will have morning access to their school building when the temperature (with wind chill factor) is below 20 degrees.
- Recess will not be held outdoors when the temperature is 15 degrees (with wind chill factor) or less.

Parents: Please make sure that children are equipped and appropriately dressed for cold weather. Coats, hats and gloves are recommended so students remain warm and comfortable while outside.