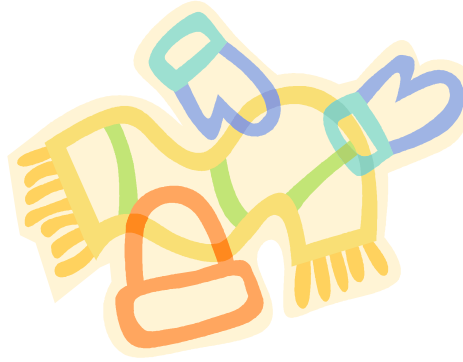


Cold Weather is Here!



As winter gets colder, the district will be using the list below of weather-condition-notification-systems to keep you in the know:

- Keep your TV and/or Radio tuned to local stations for up-to-the minute weather conditions and school closures.
- The Mead School District Webpage will have an Emergency Alert Message to let you know about school closures.
- E-Notify messages will be sent out from your school to your home email address. If you don't receive E-Notify, please go to your school's homepage and sign up today!
- Call 465-SNOW (465-7669) to hear an up-to-date recording of current road conditions or school closures.

When it's cold outside elementary schools will use these general guidelines for outside time:

- Students will have morning access to their school building when the temperature (with wind chill factor) is below 25 degrees.
- Recess will not be held outdoors when the temperature is 15 degrees (with wind chill factor) or less. Limited recess time (about 10 minutes) should be considered when the temperature ranges between 16 to 25 degrees (with wind chill factor).

Children should always be appropriately dressed (hats/coats/gloves) to access outdoor recess.